

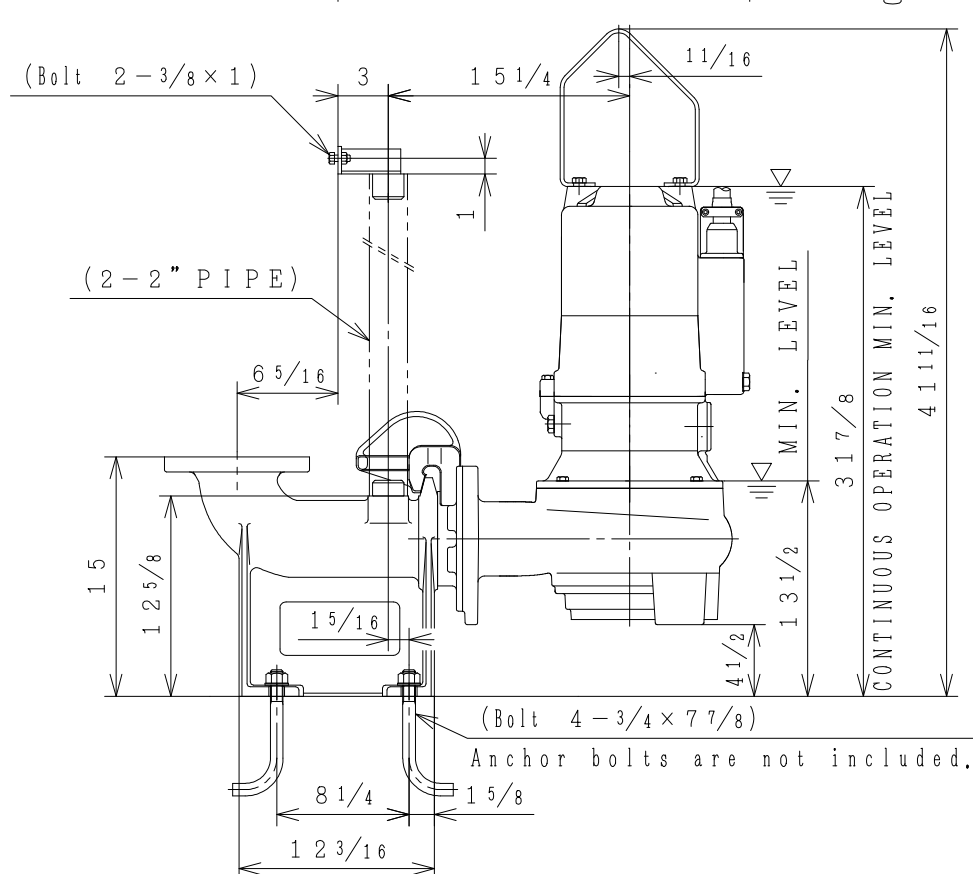
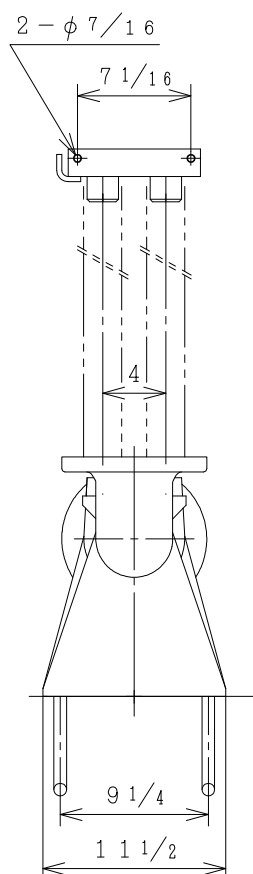
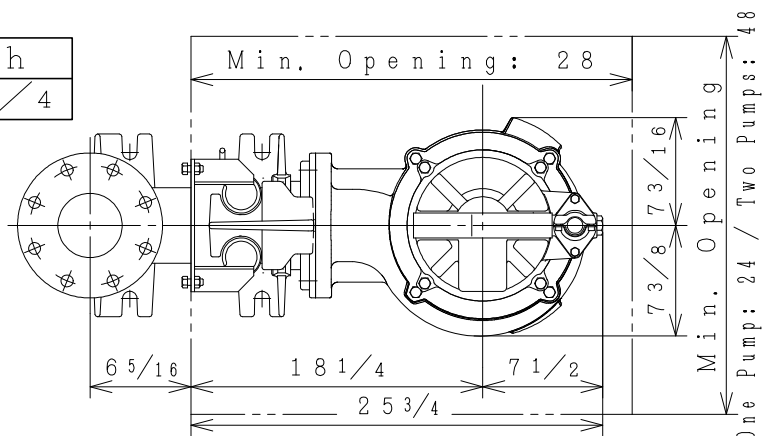
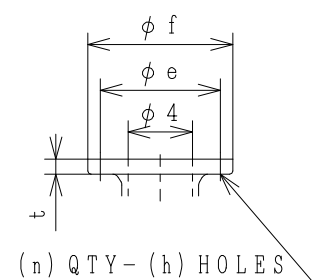
GUIDE RAIL INSTALLATION TYPE

UNIT: inch

MODEL	Impeller No.	Guide Rail system	RATED POWER (HP)	FREQ.
4CNWX47.5T2E	75-4 (S)	P 4 C Y	10	60
4CNWX47.5T3E				

FLANGE (ANSI 150 PSI F.F)

e	f	t	n	h
7 1/2	9	15/16	8	3/4



[Note] Limit operation to 30 minutes (maximum) when operating the pump between the MIN. LEVEL and CONTINUOUS OPERATION MIN. LEVEL. In the event of continuous operation, the CONTINUOUS OPERATION MIN. LEVEL must be maintained. Cables are not shown on this drawing.



DWG. N. Tanaka Aug. 04, 2014
JUDG. K. Takeuchi Aug. 22, 2014
APPD. M. Tarui Aug. 25, 2014

TITLE

PUMP DIMENSION

DWG No.

A 4 0 8 2 8 4